

# 850

ASBURY DRIVE  
BUFFALO GROVE, IL



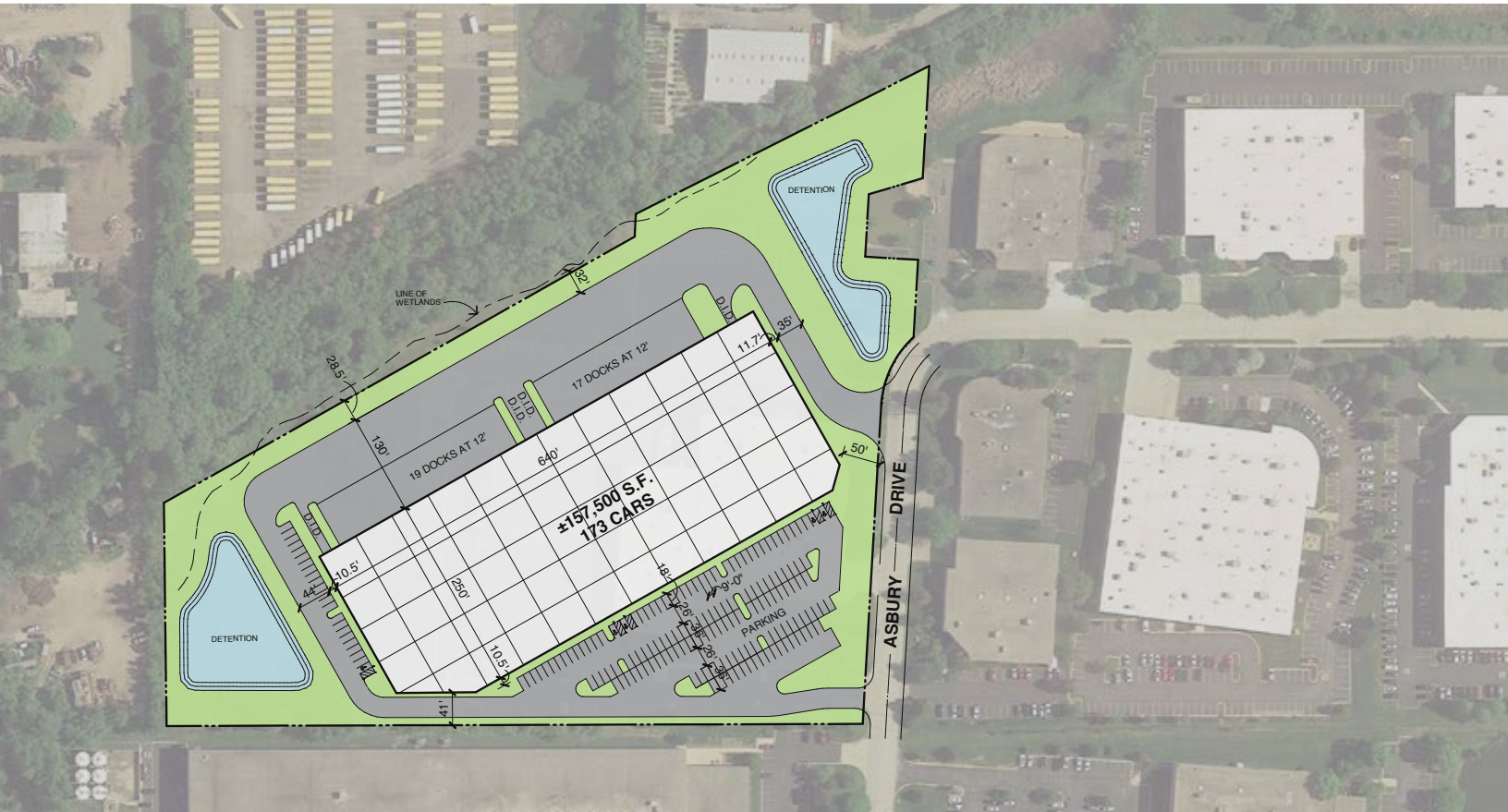
**RIDGELINE**  
PROPERTY GROUP

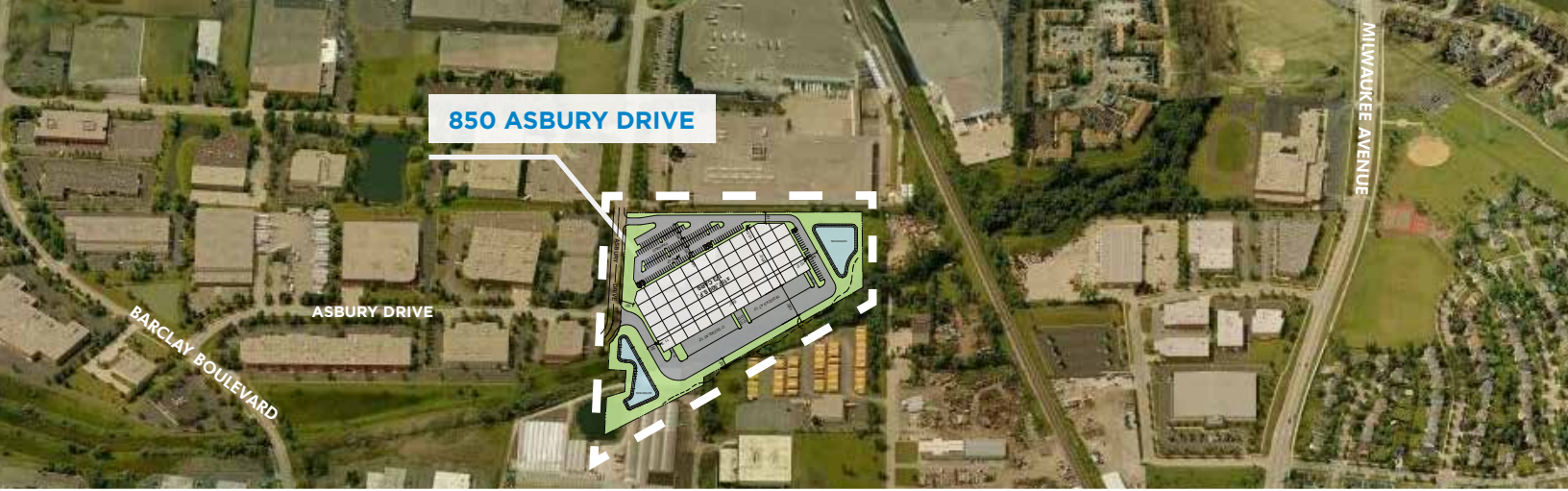
**CBRE**

# 850

ASBURY DRIVE  
BUFFALO GROVE, IL

THE ONLY NEW CONSTRUCTION IN SOUTHERN LAKE COUNTY





# BUILDING OVERVIEW

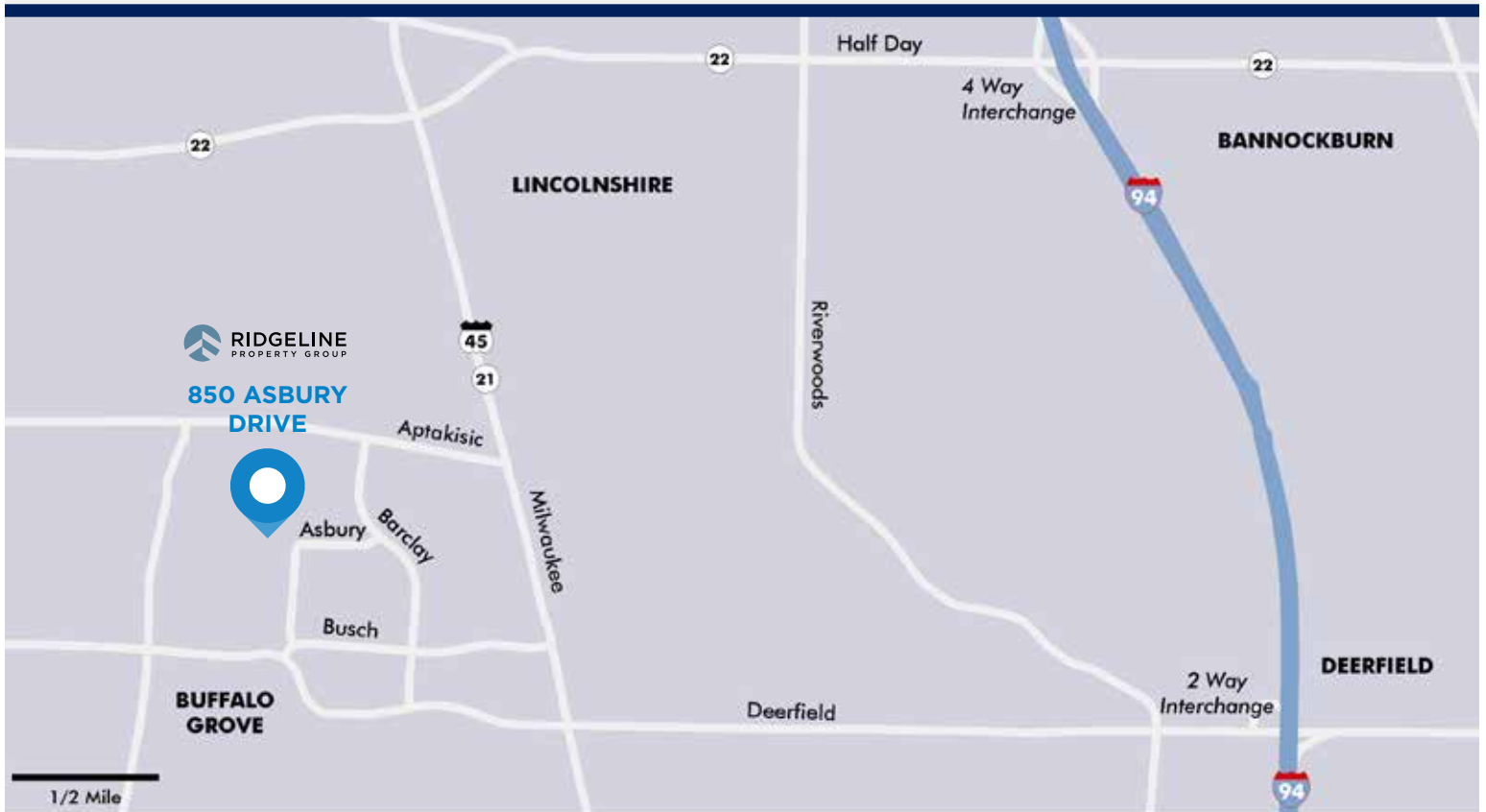
- **AVAILABLE SF:** 157,500 SF
- **OFFICE SF:** To Suit
- **CLEAR HEIGHT:** 32'
- **LAND SIZE:** 11.82 Acres
- **LOADING:** 36 Exterior Docks, 4 Drive-In Doors
- **PARKING:** 173 Cars

BEST CLEAR HEIGHT IN SOUTHERN LAKE COUNTY (32' CLEAR)

# BUILDING FEATURES

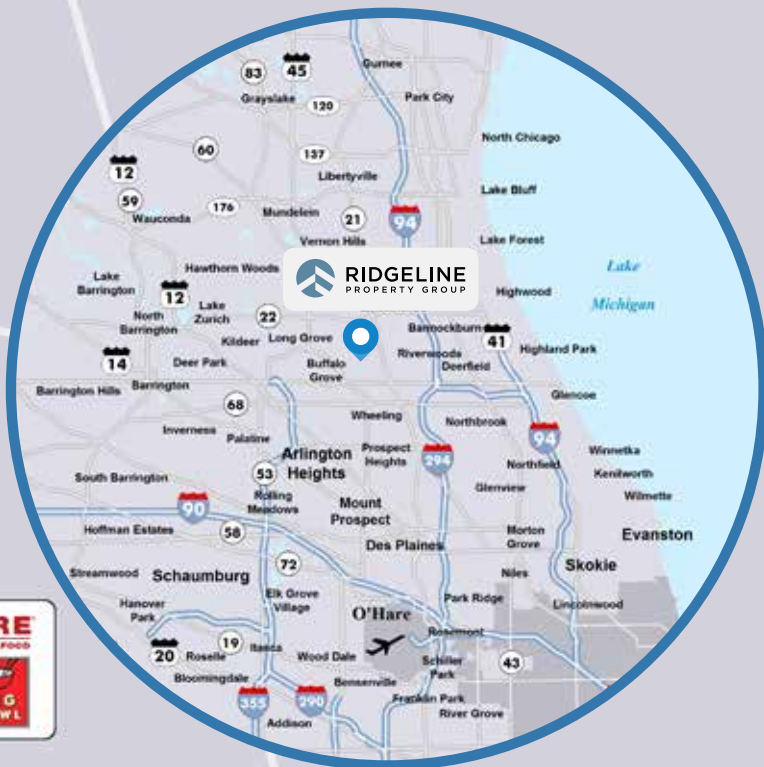
- Southern Lake County's Newest Spec Development
- Premier Business Park Setting
- Minutes to Full Four-Way Interchange at Lake-Cook Road and Half Day Road (Route 22)
- Low Lake County Taxes
- Restaurants, Shopping and Hotels Immediately North

# SITE PLAN





Aptakisic



850 ASBURY DRIVE



Asbury

Barclay



Busch



Deerfield

PJ'S BAR & GRILL

1/4 Mile

## FOR MORE INFORMATION PLEASE CONTACT:

**RYAN S. BAIN**

Senior Vice President  
847.572.1412  
ryan.bain@cbre.com

**ZACHARY C. GRAHAM**

First Vice President  
847.572.1415  
zach.graham@cbre.com

**THOMAS C. HARMON**

Associate  
847.572.1410  
thomas.harmon@cbre.com